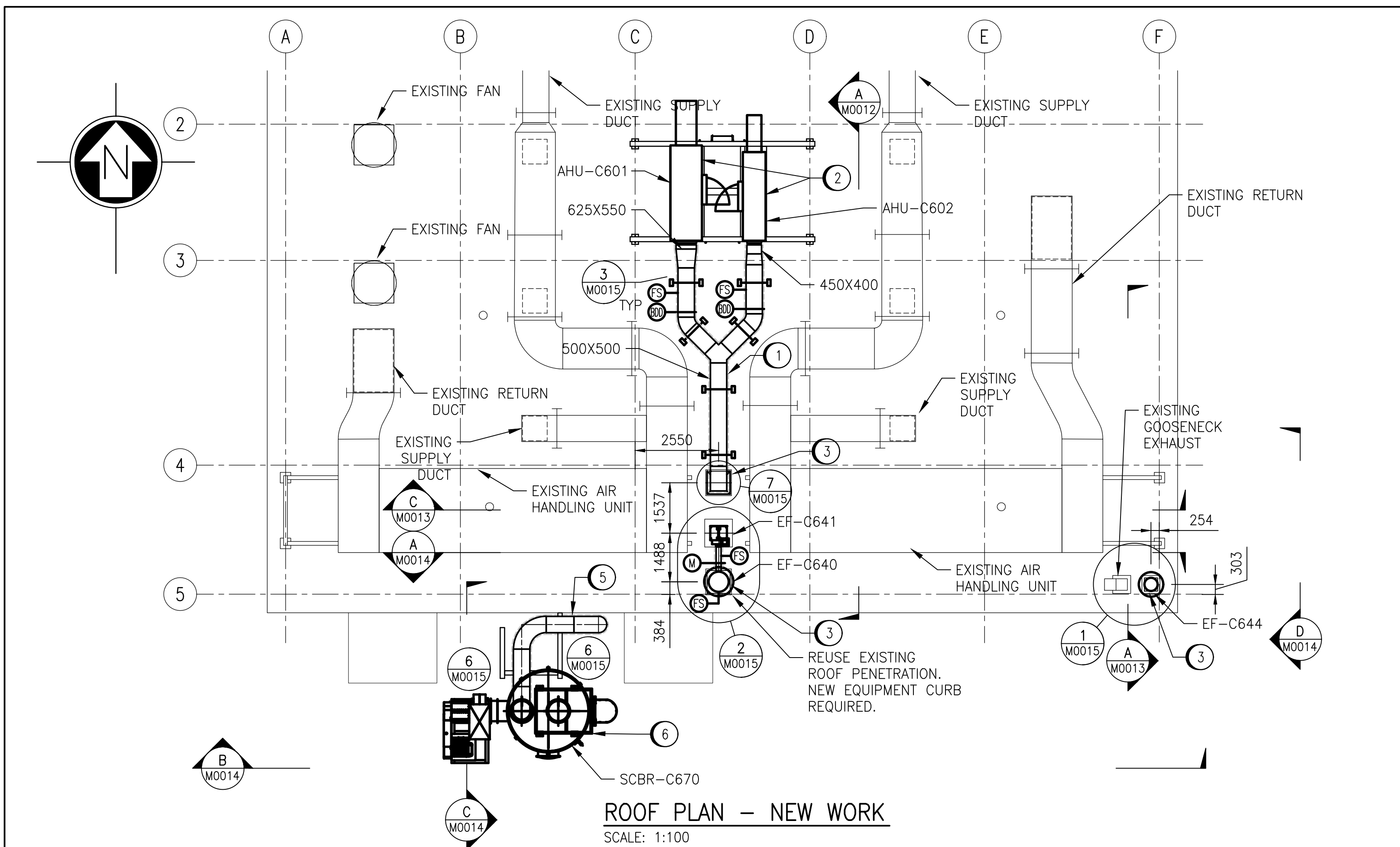
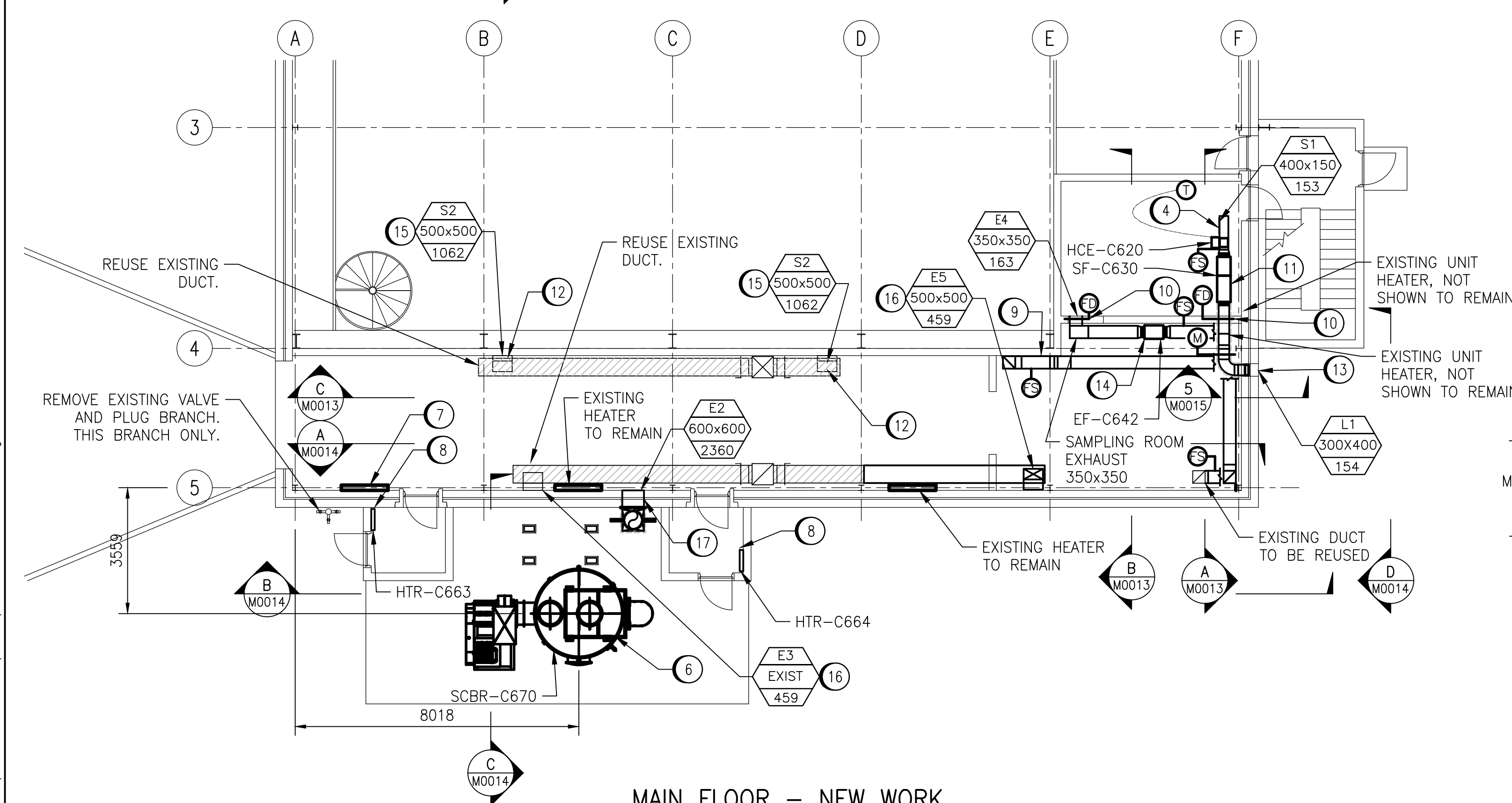


LAST SAVE: 2025/04/23 - 10:47am
PATH: \\WINPDC1.slbz\PROJ\1-0650M-MXX-001-PD.dwg
1-0650
1-0650
DRAWING NUMBER
REFERENCE DRAWINGS

A1 SIZE - 594mm x 841mm



ROOF PLAN - NEW WORK
SCALE: 1:100



MAIN FLOOR - NEW WORK
SCALE: 1:100

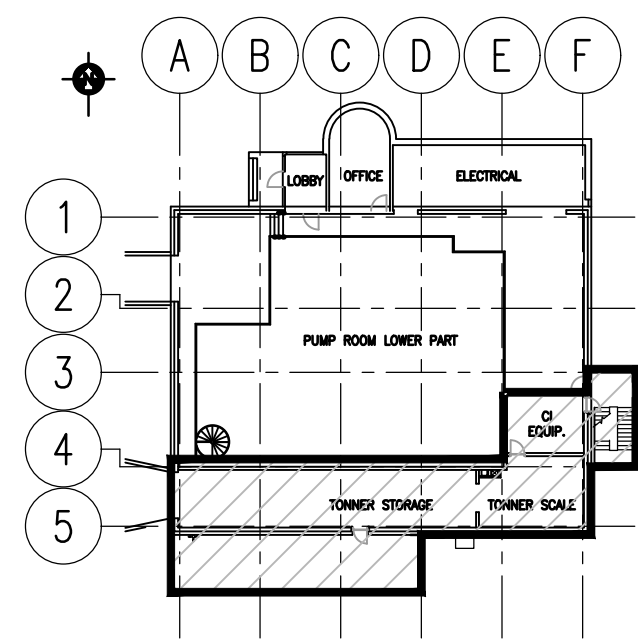
GENERAL NOTES

- DRAWING INFORMATION BASED ON HISTORICAL DRAWING AND SITE INVESTIGATIONS.
- INSULATION ON ALL EXISTING DOMESTIC WATER, FRESH AIR INTAKE, RAIN WATER LEADER, CONDENSATE AND DRAIN PIPE FITTINGS MAY CONTAIN ASBESTOS MATERIALS. REFER TO EXISTING ASBESTOS REPORTS TO CONFIRM.
- MASONRY BLOCK WALLS, CEILING OR WALL HARD PLASTERS AND CERAMIC FLOOR TILES MAY CONTAIN ASBESTOS.
- FLOW SWITCHES ARE SUPPLIED AND INSTALLED BY ELECTRICAL CONTRACTOR.
- BALANCE SUPPLY AND EXHAUST DAMPERS TO VOLUMES NOTED.



DRAWING NOTES

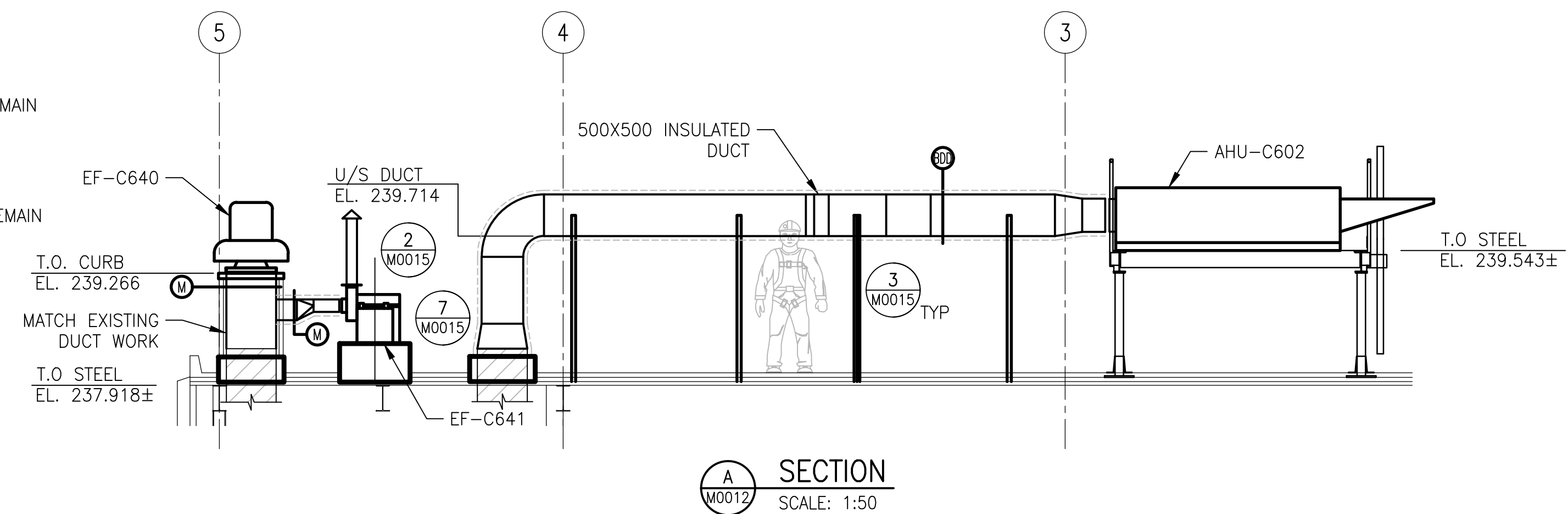
- NEW 500X500 INSULATED SUPPLY DUCTWORK. SUPPORT DUCT AT 2000mm O/C. REFER TO DETAILS FOR DUCT SADDLE ASSEMBLY. CONNECT DUCT TO NEW AHU's. SUPPLY FLEXIBLE CONNECT AT AHU TO MINIMIZE VIBRATION. ROUTE DUCT TO EXISTING ROOF CURB LOCATION.
- INSTALL NEW AHU-C601 AND AHU-C602 ON EQUIPMENT SUPPORT STRUCTURE. REFER TO STRUCTURAL DRAWINGS FOR PLATFORM DETAILS. INSTALL VIBRATION ISOLATION AS PER MANUFACTURER'S RECOMMENDATIONS.
- MODIFY EXISTING ROOF CURB TO SUIT NEW DUCT INSTALLATION. INSTALL NEW COLLAR AND FLASHING. MAKE CURB WATER TIGHT.
- SUPPLY AND INSTALL NEW Ø250 DUCT C/W 400x150 SUPPLY GRILLE.
- NEW Ø500 FRP DUCT TO BE SUPPORTED FROM STRUCTURAL FRAME. REFER TO STRUCTURAL DRAWINGS FOR DETAILS.
- SUPPLY AND INSTALL NEW CHLORINE SCRUBBER AND EXHAUST FAN PACKAGE. NEW FRP Ø500 DUCT TO BE INSTALLED FROM SCRUBBER THROUGH NEW WALL OPENING.
- EXISTING ELECTRIC BASEBOARD HEATER TO BE MOVED TO SUIT NEW DOOR LOCATION.
- SUPPLY AND INSTALL NEW 2kW WALL HEATER. CO-ORDINATE WITH ELECTRICAL TO SUPPLY POWER AND CONTROLS.
- SUPPLY AND INSTALL NEW 350x350 EXHAUST DUCT FROM CRAWLSPACE. CONNECT TO EXISTING SAMPLING ROOM DUCT.
- SUPPLY AND INSTALL NEW FIRE DAMPER SIZED TO SUIT SUPPLY DUCT.
- SUPPLY AND INSTALL NEW SUPPLY FAN C/W FLEXIBLE DUCT CONNECTORS. SUPPORT FAN FROM EXISTING STRUCTURE. SUPPLY AND INSTALL NEW DUCT HEATER AND THERMOSTAT. CO-ORDINATE WITH ELECTRICAL TO SUPPLY POWER AND CONTROLS.
- MODIFY EXISTING DUCTWORK. SUPPLY AND INSTALL NEW 500x500 SUPPLY GRILLE.
- TYPE L1 LOUVRE. REFER TO STRUCTURAL FOR OPENING DETAILS.
- SUPPLY AND INSTALL NEW EXHAUST FAN C/W FLEXIBLE DUCT CONNECTORS. SUPPORT FAN FROM EXISTING STRUCTURE. CO-ORDINATE WITH ELECTRICAL TO SUPPLY POWER AND CONTROLS. CONNECT TO EXISTING GOOSENECK EXHAUST ON ROOF.
- SUPPLY DAMPER VOLUME NOTED IS FOR EMERGENCY OPERATION. OCCUPIED OPERATION VOLUME TO BE 437 L/S AND UN-OCCUPIED VOLUME TO BE 0 L/S.
- EXHAUST DAMPER VOLUME NOTED IS FOR OCCUPIED OPERATION. UN-OCCUPIED OPERATION VOLUME TO BE 82 L/S AND EMERGENCY VOLUME TO BE 0 L/S.
- SUPPLY NEW 600x600 MOTORIZED DAMPER.



KEY PLAN
SCALE: NTS

LEGEND

	EXISTING EQUIPMENT TO REMAIN
	EXISTING DUCTWORK TO REMAIN
	NEW EQUIPMENT
	NEW DUCTWORK
	INSULATED DUCTWORK
	EXISTING ELECTRICAL HEATER
	NEW ELECTRICAL HEATER
	MOTORIZED DAMPER
	BACK DRAFT DAMPER
	FIRE DAMPER
	THERMOSTAT
	FLOW SWITCH
	DIFFUSER/GRILLE
	TYPE
	SIZE
	VOLUME



DESIGN CRITERIA:

THE BUILDING ENVIRONMENTAL HEATING/COOLING SYSTEMS SHOWN ON THESE DRAWINGS HAS BEEN DESIGNED TO THE REQUIREMENTS OF THE MANITOBA BUILDING CODE AND VENTILATED AT A MINIMUM OF 6 AIR CHANGES PER HOUR (ACH) CONTINUOUSLY. MORE SPECIFICALLY AS FOLLOWS:

- OUTDOOR CONDITIONS OF -33°C IN WINTER.
- INDOOR CONDITIONS OF 21°C IN WINTER.

METRIC

WHOLE NUMBERS INDICATE MILLIMETRES
DECIMALIZED NUMBERS INDICATE METRES

0.0 1.0 2.0 4.0 6.0

1:100



148 Nature Park Way, Winnipeg, Manitoba
Canada R3P 0X7 204-786-8080

DESIGNED BY: T. SHAW
CHECKED BY: S. NORSEWORTHY

DRAWN BY: M. CAUDINO
APPROVED BY: S. NORSEWORTHY

SCALE: AS NOTED
ISSUED FOR CONSTRUCTION BY: M. SKINNER

DATE: 2023-03-06
DATE: 2025/04/30

CONSULTANT NO.: 694715-1000-450D-1001

ENGINEER'S SEAL



HURST PUMPING STATION
CHLORINE SYSTEM UPGRADE
MECHANICAL
NEW WORK
PLANS AND SECTION

CITY DRAWING NUMBER
1-0650M-M0012

SHEET
001

REV.
00

SIZE
A1

1-0650M-MXX-001-PD.dwg